

OUR FOOD SYSTEM: FROM FARM TO TABLE



Module 2 Student Handouts

Instructions: It is easiest to print this document **double-sided, on the short-edge**. Print 1 copy for every 3 students in your class. Individually cut out the Fair Share cards from pages 2-5 into card decks.





ACTIVITY #1: FAIR SHARE CARD SORT: FRONT (ONE DECK PER 3 STUDENTS)

Bacon



Steak



Bread



Carrots



Cereal



Tomatoes



Eggs



Organic Stone Ground
Flour



Ham



Lettuce



Milk



Bagel



Potatoes



Soda



ACTIVITY #1: FAIR SHARE CARD SORT: BACK



Retail
Percent of Retail for
Farmer
Farm Share

Retail
Percent of Retail for
Farmer
Farm Share



ACTIVITY #2: FOOD CHAIN INFOGRAPHIC

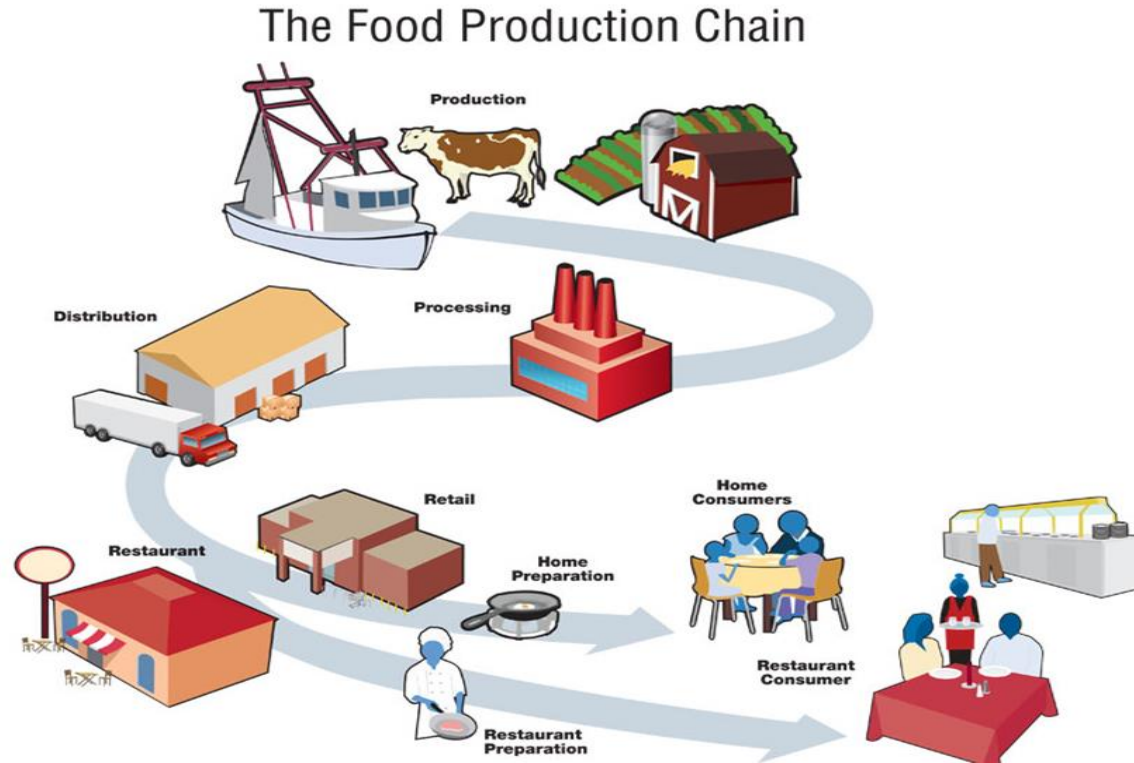


Image Source: Centers for Disease Control and Prevention, 2013 (https://www.cdc.gov/foodsafety/outbreaks/investigating-outbreaks/figure_food_production.html).

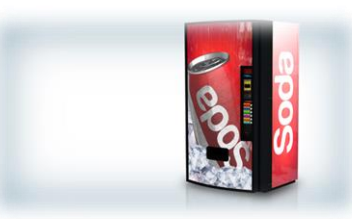
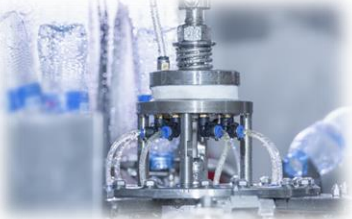
ACTIVITY #3: THE JOURNEY – CHEESE



ACTIVITY #3: THE JOURNEY – CHEESE

<p>Cheese is graded by the USDA.</p>	<p>Cheese is retailed in the grocery store.</p>	<p>Macaroni and cheese is enjoyed on your dinner table.</p>	<p>Manure is spread on fields.</p>
<p>Milk is pasteurized to kill bacteria</p>	<p>Milk truck comes to transport milk to the cheese plant</p>	<p>Cultures are added to the milk, and whey is squeezed out of the milk</p>	<p>Cheese is packed in wax or plastic.</p>
<p>Corn and soy are harvested from the field for feed.</p>	<p>Calves are born. Cows do not produce milk until a baby calf is born.</p>	<p>Cows are milked.</p>	<p>Milking equipment, including pumps and tanks, are manufactured.</p>

ACTIVITY #3: THE JOURNEY – SODA



ACTIVITY #3: THE JOURNEY – SODA (BACK)

Soda cans are made from recycled aluminum	Corn, cane, or beets are planted	Corn, cane, or beets are harvested	Corn, cane, or beets are washed, packed, and transported to syrup factory
Sugar syrup is manufactured	Flavor development and testing is done in the lab	Water is filtered	Water and syrup are combined and sent through a carbonator
Soda is canned or bottled	Marketers design labels, magazine ads, and television ads	Soda is distributed to grocery stores, restaurants, event venues, and vending machines	Glass bottles or cans are recycled or sent to the landfill

ACTIVITY #3: THE JOURNEY – CARROTS



ACTIVITY #3: THE JOURNEY – CARROTS (BACK)

Carrots are bred for seeds that have good harvests, are resistant to disease, and have great flavor.

Potash is mined to make potassium rich fertilizer.

Tractor plants carrot seeds in rows.

Carrots are sold at the farmers market.

Carrots are harvested by a tractor or by hand.

Carrots are washed and graded.

Carrots are transported from the farm to their destination.

Plastic bags are manufactured for frozen carrot packaging.

Carrots are chopped and flash frozen in a factory.

Carrots are canned in a factory.

Carrots are shipped to a distributor.

Grocery stores order carrots from distributor.

ACTIVITY #4: FOOD DOLLAR INFOGRAPHIC

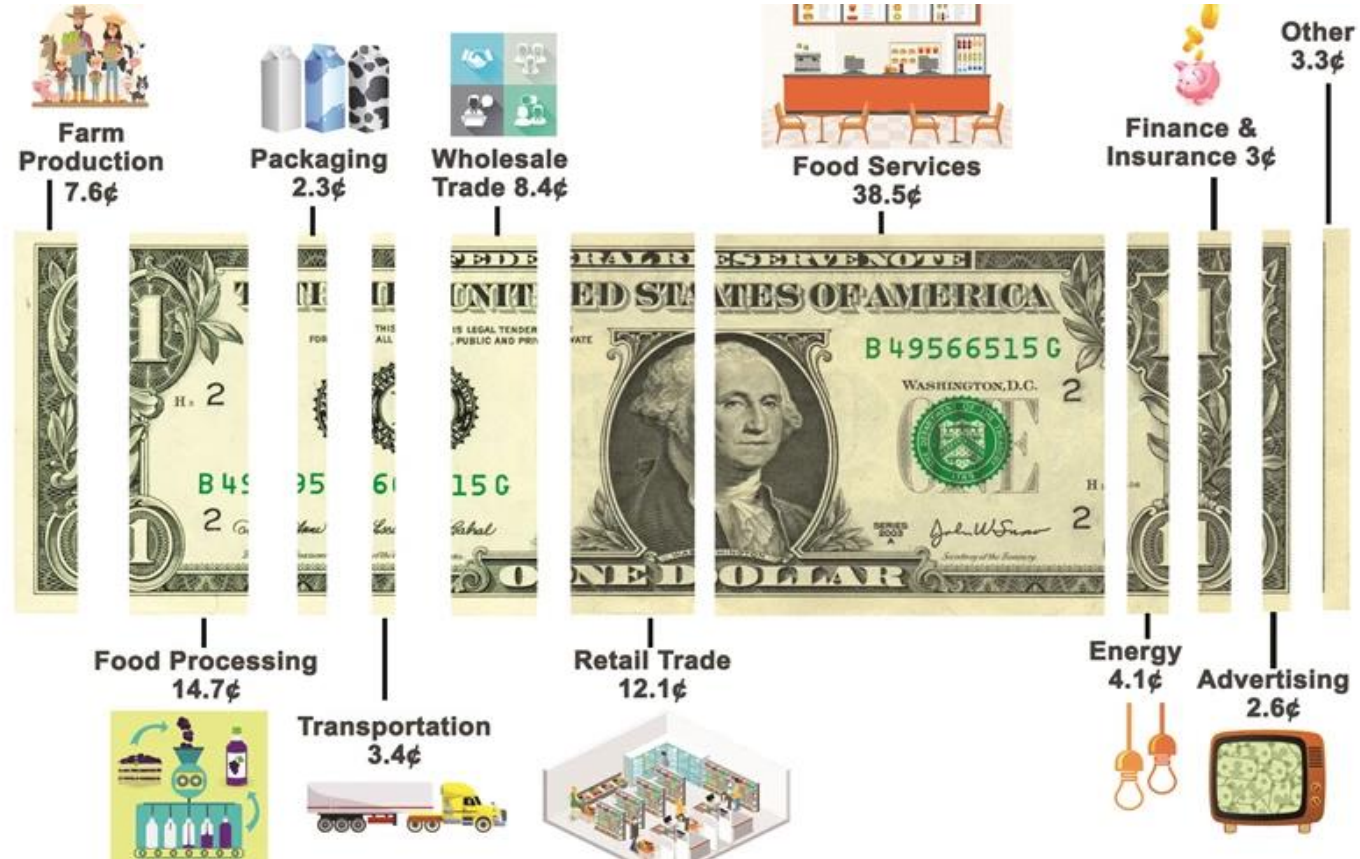
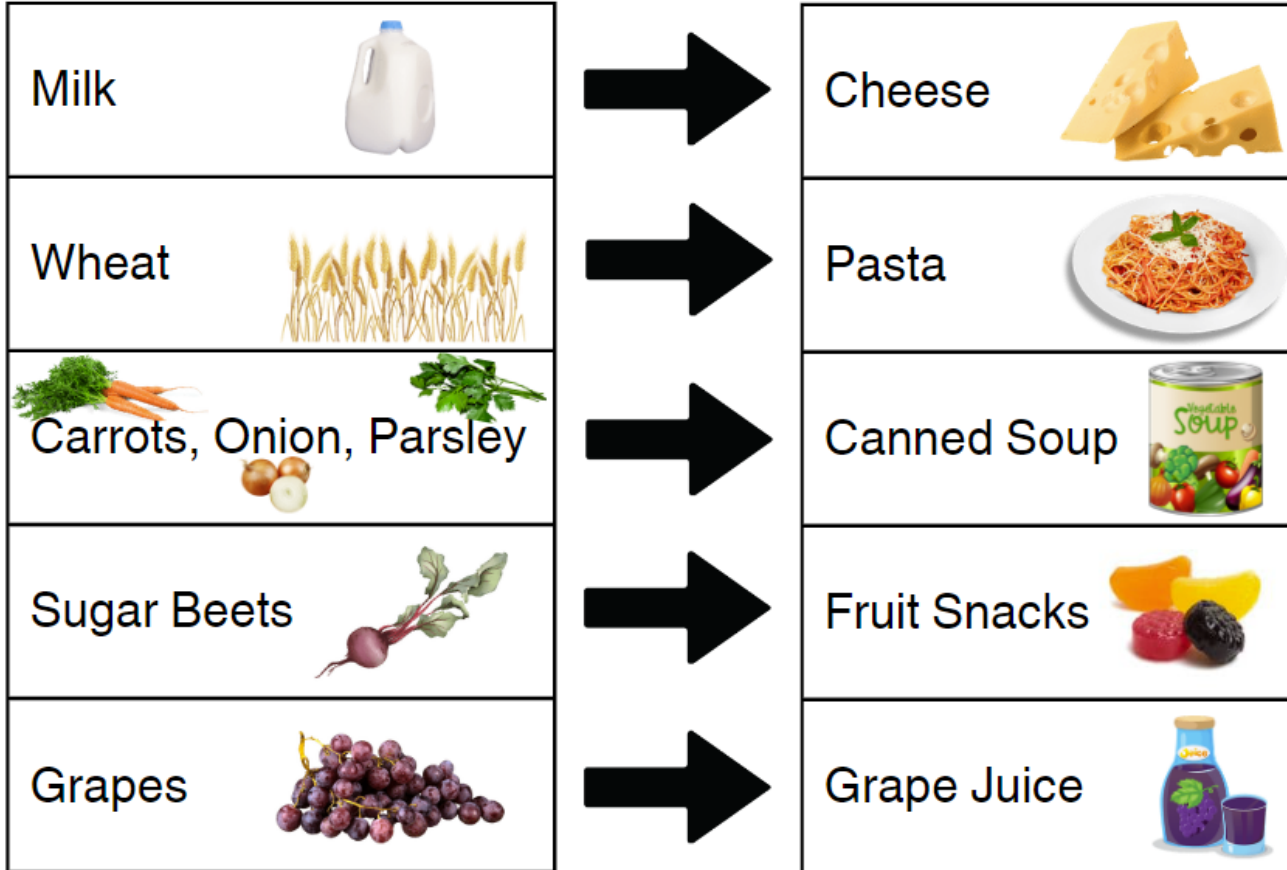


Image illustrates how much of the average dollar spent on food in the United States goes to each part of the food supply chain. Notice that farmers and ranchers only get 7.6 cents of the average food dollar. Source: US Department of Agriculture 2019

ACTIVITY #4: VALUE ADDED PRODUCT EXAMPLES



ACTIVITY #5: THE FOOD WEB CARDS #1



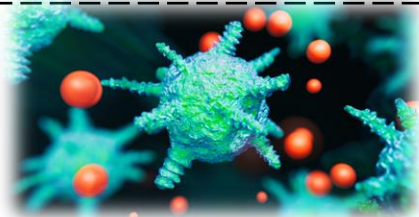
Cow



Climate



Compost



Pathogen



Chicken



Soil



Fish



Crop



Water

ACTIVITY #5: THE FOOD WEB CARDS (BACK)

Compost

Needs: Air, plant material for decomposing

Provides: Soil and plant nutrition

Climate

(Weather patterns over long period of time)

Needs: Sunlight, water, limited greenhouse gas pollution

Provides: Rain and temperatures necessary for crops. Crops provide food for humans and animals.

Cow

Needs: Food, water, humane living conditions

Provides: Dairy, meat, manure as plant fertilizer

Soil

Needs: Nutrition, microorganisms, plant roots to prevent erosion

Provides: Access to nutrition for plants

Chicken

Needs: Food, water, humane living conditions

Provides: Eggs, meat, manure as plant fertilizer

Pathogen

Needs: Often need water, heat, and food

Provides: Causes disease in humans, plants, and animals

Fish

Need: Safe water environment

Provide: Food for humans, Support of marine environments

Crop

Needs: Sunlight, carbon dioxide, water, soil, nutrients

Provides: Food, Soil nutrition, oxygen

Water

Needs: Safety from pollution from animal waste and fertilizers

Provides: Hydration for animals and plants, environment for marine life. Helps to stabilize temperatures in ecosystems.

ACTIVITY #5: THE FOOD WEB CARDS (#2)



ACTIVITY #5: THE FOOD WEB CARDS (BACK)

<p>Supermarket Needs: Customer base, building, energy, workers</p> <p>Provides: Market for farms and other food industries, access to healthy food</p>	<p>Government Needs: Citizen engagement, money</p> <p>Provides: Food safety regulations, money for farms during hard times, food security assistance</p>	<p>Food Citizen Needs: Access to healthy food</p> <p>Provides: Advocacy for healthy food, money for food</p>
<p>Truck Driver Needs: Fuel, truck, well maintained roads, wages</p> <p>Provides: Access to a variety of foods year round from many locations</p>	<p>Food Service Worker Needs: Safe working conditions, good wages</p> <p>Provides: Easy access to food for customers</p>	<p>Corner Store Needs: Customer base, money, building, energy, workers</p> <p>Provides: Often convenient access to food</p>
<p>Pesticide Needs: Manufacturer, equipment to apply the pesticide</p> <p>Provides: Protection to plants from harmful weeds of insects. Also often causes pollution to the air, soil, and waterways</p>	<p>Chemical Fertilizer Needs: Manufacturer, equipment for application, raw materials</p> <p>Provides: Nutrition for soil and plants, can contaminate waterways</p>	<p>Farm Worker Needs: Safe work environment, fair wages</p> <p>Provides: Labor to grow food for people and agricultural animals</p>